



INTRO TO FOSSILS



Learn about ancient
life with this hands-on
workshop with **real fossils.**

PROGRAM DESCRIPTION

Introduction

Introduction to Fossils features a structured narrative to those that are interested in fossils. Offered to all ages over four, the facilitator will entertain, educate and engage the participants with real fossils and supporting props.

Workshop narrative (for each fossil)

1. CREATE INTEREST

A curious-looking fossil is handed to the first participant and they are asked "what is this?". They are presented with a placard with three answers. Participant examines the object and gives their response.

2. EXAMINE (REAL) FOSSILS

The fossil is passed around to each participant and each gives their reply in an open forum where they can briefly explain their reasoning or others can change their mind.

3. REVEAL ANSWERS

Participant reveals the answer in a suspenseful way by reaching into a box or covering their eyes, revealing a figurine or facsimile (usually an animal) to all.

4. PRESENT FACTS BEYOND THE ANSWER

Facilitator explains how the curious-looking fossil belonged to the answer object and why it wasn't the others. He then proceeds to show more interesting facts using placards about the fossil's original owner (e.g. whales used to walk on land) in a structured conversation with the participants.

5. MORE FOSSILS

The process repeats three to five more objects.

Series outcomes

1. Knowledge of specific extinct animal groups, deep time, geology, astronomy, palaeontology, dinosaurs, fossilization, evolution, extinction and related topics.
2. The opportunity to examine real fossils by hand.
3. Entertainment.
4. Inspire motivation for continued learning in above areas.

PROGRAM DESCRIPTION

Intro to Fossils specimens

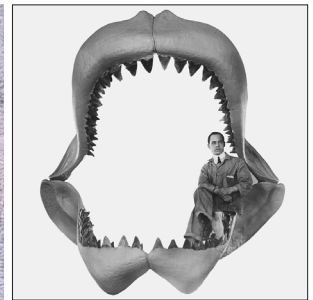
WHALE INNER EAR BONE

- Choices: fossil dinosaur poop, whale inner ear bone, fossilized plant seed.
- Lesson: Students are shown how this bone belonged to an unknown ancient whale. *Ambulocetus*, the whale ancestor that walked on land and looked like a dog, will also be discussed.



MEGALODON TOOTH

- Choices: shark tooth, dinosaur tooth, giant lizard claw.
- Lesson: Students are shown that this comes from a gigantic (but fortunately extinct) shark *Carcharocles megalodon*, similar to The Great White Shark. An illustration is shown for size comparison.



MAMMOTH TOOTH

- Choices: fossilized honeycomb, mammoth tooth, old candy bar (don't bite it).
- Lesson: Students are explained how this tooth would have fit into the jaw of the enormous creature with images of the mammoth itself. Size comparison of this specimen vs. larger specimens and humans is shown.



SPINOSAURUS DINOSAUR TOOTH

- Choices: Crocodile tooth, railway spike, dinosaur tooth.
- Lesson: Explain the creature it came from and how big it was! Also explain that birds are living dinosaurs and that they can ask to "pass the dinosaur" at the dinner table when eating chicken.



Different or additional specimens may be used.

WORKSHOP DETAILS

Particulars

- The workshop requires a table large enough to accommodate the number of participants. Very large groups can be accommodated with multiple tables in a large room.
- Anybody over the age of four can participate. Persons under the age of 12 require the parent or guardian supervision.
- The workshops are not designed for those with disabilities, but can be adapted for them in some cases.

Costs

For Kids / Youth

4-12 or 13-17 year-olds.

4-10 kids.

75 minutes duration

\$25 per person

Location of your choice* or ask about venues around the GTA.

All children must be joined by parent or guardian.

For Adults

18+

4-10 adults

75 minutes duration

\$25 per person

Location of your choice* or ask about venues around the GTA.

Organizations

Any age group

No maximum but require additional assistants over 24.

90 minutes duration

\$240 per workshop

At your establishment in the GTA. For outside GTA please contact us.

About us

WEBSITE
DinoBites.ca

EMAIL
hello@dinobites.ca

INSTAGRAM
[/dino.bite](https://www.instagram.com/dino.bite)

PHONE
647 898 8907

